

**GILDAN®**



**8800**

**DryBlend Adult Polo**

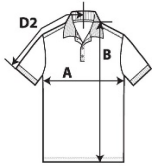


**DETAILS**

**Fabric**  
**Yarn Count**  
**Features**

50% Polyester, 50% US Cotton, 203.0 G/SqM (White 193.0 G/SqM)  
18/1  
DryBlend's moisture-wicking fabric delivers both comfort and coolness.  
A decorator's favorite for work wear and uniforms.  
Proud member of the US Cotton Trust Protocol (USCTP).  
Cotton products from Gildan support more sustainable + ethical cotton farming.  
Companion style: 8800B  
Midweight fabric with DryBlend® technology  
Contoured welt collar and cuffs  
Clean finished placket with dyed-to-match buttons  
Classic fit, tubular body  
High-performing tear-away label  
Guatemala, Honduras  
S - 3XL 36 PIECES  
Colours 14  
SKU's 84

**Country of Origin**  
**Case Packs**  
**Colours**  
**SKU's**



**SPECIFICATIONS**

	Tol-	Tol+	S	M	L	XL	2XL	3XL
<b>Centimeters</b>								
<b>Chest (A)</b>	2.540	2.540	48.260	53.340	58.420	63.500	68.580	73.660
<b>Length from HPS (B)</b>	2.540	2.540	71.120	74.930	77.470	80.010	82.550	83.820
<b>Sleeve length (Center back) (D2)</b>	1.905	1.905	44.450	48.260	51.435	55.880	59.690	63.500
<b>Inches</b>								
<b>Chest (A)</b>	1.000	1.000	19.000	21.000	23.000	25.000	27.000	29.000
<b>Length from HPS (B)</b>	1.000	1.000	28.000	29.500	30.500	31.500	32.500	33.000
<b>Sleeve length (Center back) (D2)</b>	0.750	0.750	17.500	19.000	20.250	22.000	23.500	25.000

**COLOURS**

Black  
Carolina Blue  
Dark Heather  
Gold  
Graphite Heather  
Light Blue  
Navy  
Orange  
Purple  
Red  
Royal  
Sand  
Sport Grey  
White

Code	Colour Chip	Sizes	Comments
036	[Black chip]	S-3XL	
109	[Carolina Blue chip]	S-3XL	
108	[Dark Heather chip]	S-3XL	
024	[Gold chip]	S-3XL	
516	[Graphite Heather chip]	S-3XL	
069	[Light Blue chip]	S-3XL	
032	[Navy chip]	S-3XL	
037	[Orange chip]	S-3XL	
081	[Purple chip]	S-3XL	
040	[Red chip]	S-3XL	
051	[Royal chip]	S-3XL	
038	[Sand chip]	S-3XL	
095	[Sport Grey chip]	S-3XL	
030	[White chip]	S-3XL	

**CHANGES**

Total Net Change 0 SKU's