



**85800**

**Hammer Adult Pique Polo**



**DETAILS**

**Fabric**  
**Yarn Count**  
**Features**

100% Ring Spun Cotton, 223.0 G/SqM (White 214.0 G/SqM)  
24/1  
Hammer offers a comfortable + durable, heavier weight pique fabric.  
Proud Better Cotton™ member.  
Cotton products from Gildan support more sustainable + ethical cotton farming.  
Ring spun fabric feels great against your skin  
Contoured welt collar and cuffs  
Rolled forward topstitched shoulder  
Clean finished placket with dyed-to-match buttons  
Modern classic fit, side seamed body with side vents  
High-performing tear-away label

**Country of Origin**

Bangladesh

**Case Packs**

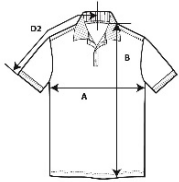
S - 3XL 36 PIECES

**Colours**

9

**SKU's**

54



**SPECIFICATIONS**

**Centimeters**

|   | Tol-  | Tol+  | S      | M      | L      | XL     | 2XL    | 3XL    |
|---|-------|-------|--------|--------|--------|--------|--------|--------|
| <b>Chest (A)</b>                        | 2.540 | 2.540 | 51.500 | 54.700 | 57.200 | 60.400 | 63.600 | 67.400 |
| <b>Length from HPS (B)</b>              | 2.540 | 2.540 | 71.200 | 75.000 | 77.500 | 80.100 | 82.600 | 85.200 |
| <b>Sleeve length (Center back) (D2)</b> | 1.270 | 1.270 | 44.500 | 47.000 | 48.900 | 52.100 | 54.700 | 57.800 |

**Inches**

|   | Tol-  | Tol+  | S      | M      | L      | XL     | 2XL    | 3XL    |
|---|-------|-------|--------|--------|--------|--------|--------|--------|
| <b>Chest (A)</b>                        | 1.000 | 1.000 | 20.250 | 21.500 | 22.500 | 23.750 | 25.000 | 26.500 |
| <b>Length from HPS (B)</b>              | 1.000 | 1.000 | 28.000 | 29.500 | 30.500 | 31.500 | 32.500 | 33.500 |
| <b>Sleeve length (Center back) (D2)</b> | 0.500 | 0.500 | 17.500 | 18.500 | 19.250 | 20.500 | 21.500 | 22.750 |

**COLOURS**

- Black
- Charcoal
- Forest Green
- Navy
- Red
- Ring Spun Sport Grey
- Royal
- Sapphire
- White

Code

Colour Chip

Sizes

Comments

|     |  |       |                           |
|-----|--|-------|---------------------------|
| 036 |  | S-3XL |                           |
| 042 |  | S-3XL |                           |
| 033 |  | S-3XL |                           |
| 032 |  | S-3XL |                           |
| 040 |  | S-3XL |                           |
| 295 |  | S-3XL | 90% Cotton, 10% Polyester |
| 051 |  | S-3XL |                           |
| 026 |  | S-3XL |                           |
| 030 |  | S-3XL |                           |

**CHANGES**

Total Net Change 0 SKU's